



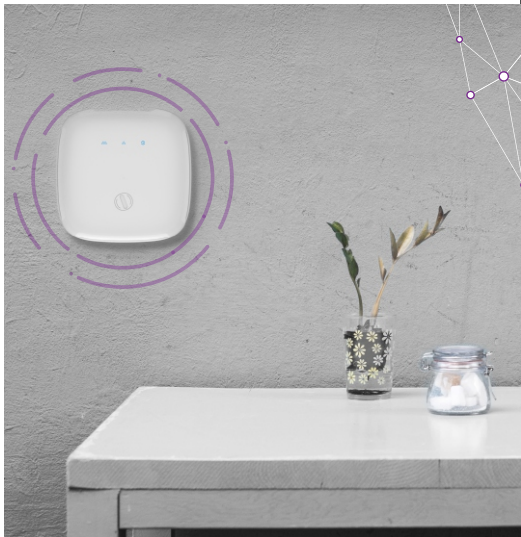
by HFCL

ion8i Access Point

QUICK START GUIDE



ANYWHERE EVERYWHERE



Thank you for choosing ion8i Wireless Access Point with 4x4:4 Multi-User MIMO and 802.11ac Wave 2 compliance.

Packaging Content

1. ion8i Wireless Access Point
2. Quick Start Guide
3. AC Power Adaptor
4. Mounting Bracket

AC Power Adaptor
(Varies by Region)



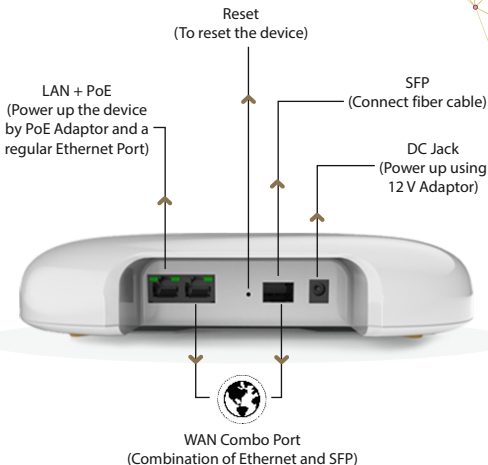
ion8i
Access Point



Mounting Bracket



Product Overview

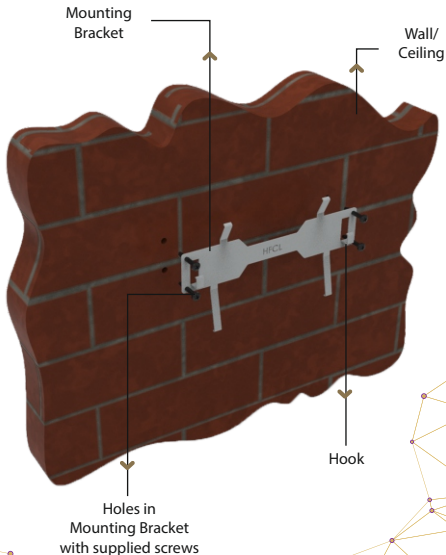


Mounting of ion8i Access Point

1. Place the Mounting Bracket which came with the package on a wall or ceiling and mark holes with a marker where you will insert the screws. Drill holes in the marked points and insert the plastic wall anchors.

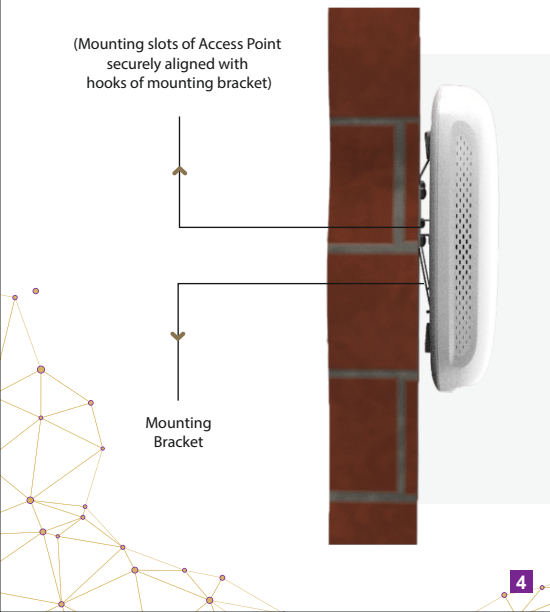
2. Use the supplied screws and attach the mounting bracket to the wall.

Note: Make sure that the mounting bracket is tightly installed before mounting the Access Point on the wall or ceiling.



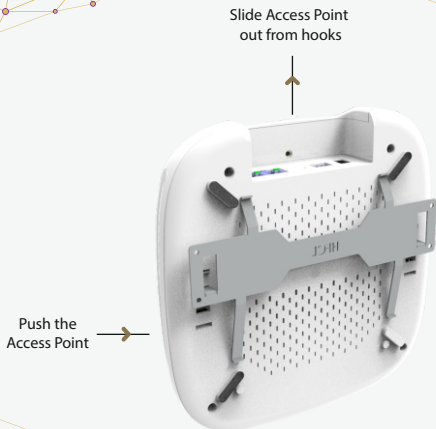
3. Align the mounting slots of Access Point with the hooks of the mounting bracket

(Mounting slots of Access Point
securely aligned with
hooks of mounting bracket)



Unmounting of ion8i Access Point

1. Slightly push the Access Point towards the mounting bracket and slide the hooks out from the mounting slots.

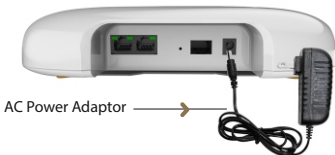


WARNING: Insecure mounting might damage the device or cause injury. IO is not responsible for damages incurred by insecure wall or ceiling mounting.

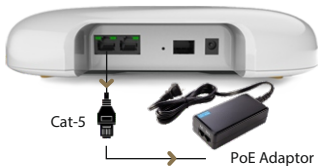
Getting the ion8i Online

Step 1: Power up

The Access Point can be powered up using PoE Adaptor or AC Adaptor (12V) as shown below:



— Power up using AC Power Adaptor —



— Power up using PoE Adaptor —

Note: The Reset button serves two functions:

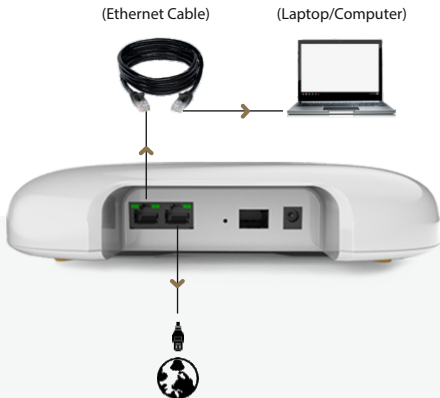
Restart: Press and release the Reset button quickly.

Restore to Factory Default Settings: Press and hold the Reset button for more than five seconds.

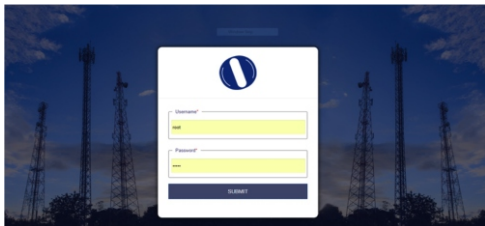
Step 2: Connect to the network

Follow the steps mentioned below and connect the Access Point to a network through GUI:

1. Connect an Ethernet cable to the computer.
2. Connect the other end of the Ethernet cable to the LAN port on the ion8i Access Point.



3. Open the web browser and enter the Access Point static IP address in the address bar: 192.168.1.1
4. A login screen will appear.



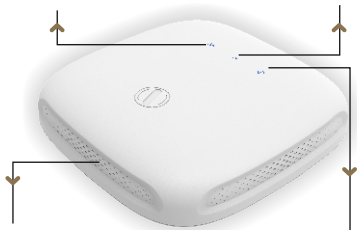
5. Enter the default login credentials as provided with your ion8i Access Point.

NOTE: Refer the respective user manual on our website www.ionetworks.in for detailed information on GUI features.

Step 3: Check the LED status

5 GHz LED
(Blinks in blue color when
the wireless network interface
comes up)

2.4 GHz LED
(Blinks in blue color when
the wireless network interface
comes up)



VENT
(Transfers the heat
in ambient)

POWER LED
(Blinks in blue color to notify
the user that the device is
powered ON)

Observe the following safety precautions to avoid damage to the ion8i Access Point:

1. Do not subject the device to high temperatures.
2. Keep away from high voltage cables.
3. Disconnect the device before cleaning it.
4. Do not wipe the device with a damp cloth.
5. Do not open the enclosure of the Access Point.
6. Fasten the device tightly with the mount.



by HFCL

Contact us:

Email: iosupport@hfcl.com

Website: www.hfcl.com
www.io.hfcl.com

8, Commercial Complex, Masjid Moth
Greater Kailash-II, New Delhi-110048